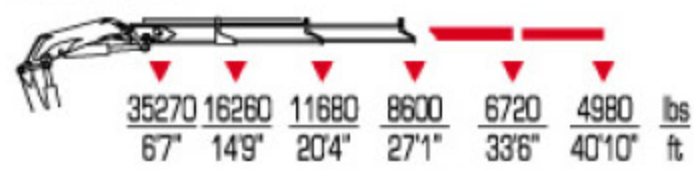


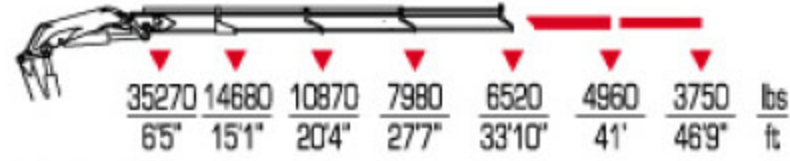
[35 s][35 s] LC



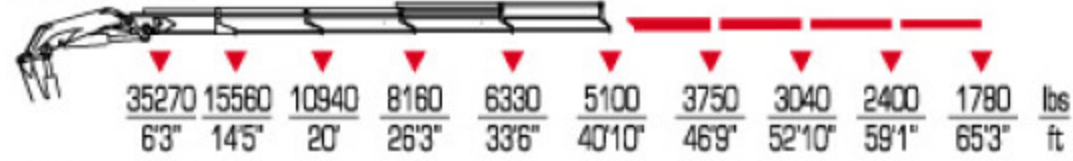
35022 S



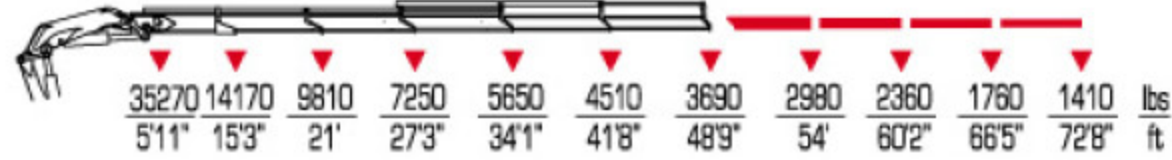
35023 S



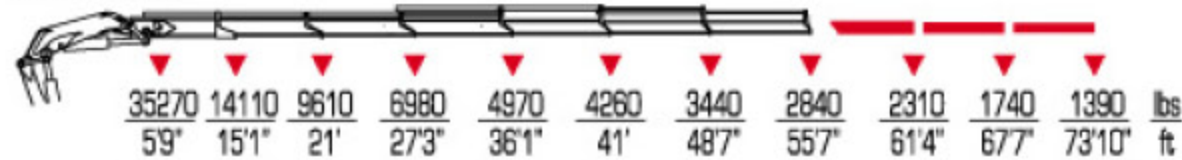
35024 S



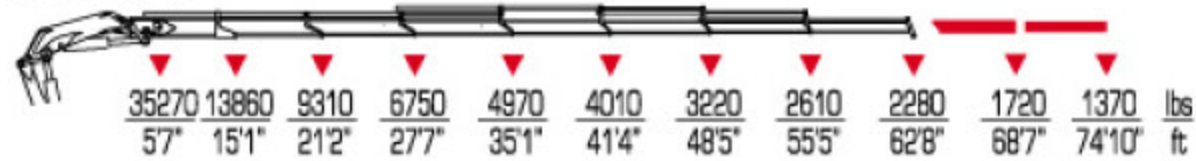
35025 S



35026 S



35027 S



35023 S+ J903.20



35024 S+ J903.20



35024 S+ J904.20



35025 S+ J903.20



35025 S+ J904.20



35026 S+ J702.20



35026 S+ J703.20



New

New

New

	ft lbs	gals /min	Psi	°	lbs	ST	LC				
35022 S	235070	18	4280	410	7871	8201	8"2"	8'	4"3"		35022 S
35023 S	227840	18	4280	410	8422	8752	8"2"	8'	4"3"		35023 S
35024 S	220610	18	4280	410	8907	8237	8"2"	8'	4"3"		35024 S
35025 S	209870	18	4280	410	9370	9700	8"2"	8'	4"8"		35025 S
35026 S	206620	18	4280	410	9766	10229	8"2"	8'	4"8"		35026 S
35027 S	202960	18	4280	410	10141	10472	8"2"	8'	4"8"		35027 S
35023 S + J903.20	-	18	4280	410	9899	10229	8"4"	8'10"	5'		35023 S + J903.20
35024 S + J903.20	-	18	4280	410	10384	10714	8"4"	8'10"	5'		35024 S + J903.20
35024 S + J904.20	-	18	4280	410	10560	10891	8"4"	8'10"	5'		35024 S + J904.20
35025 S + J903.20	-	18	4280	410	10847	11177	8"4"	8'10"	5'		35025 S + J903.20
35025 S + J904.20	-	18	4280	410	11023	11354	8"4"	8'10"	5'		35025 S + J904.20
35026 S + J702.20	-	18	4280	410	10869	11199	8"4"	8'10"	5'		35026 S + J702.20
35026 S + J703.20	-	18	4280	410	11001	11332	8"4"	8'10"	5'		35026 S + J703.20